

KWIK-WAY®

Aligner

Lifts



PATENTED
Hydraulic Leveling
system

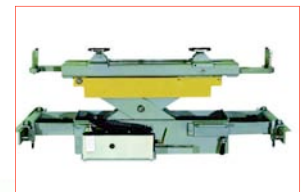
- Hydraulic leveling is accomplished by means of a patented synchronization device - assuring constantly level lifting platforms regardless of weight distribution
- All pivot points incorporate self-lubricating bushings for long life
- No cross rails or torsion bars between lifting platforms provides maximum accessibility in the work area
- The 201" platforms allow for lifting of light commercial vehicles and long wheelbase vans
- Rear slip plates with pneumatic locks provide for angular and transversal movements in both directions



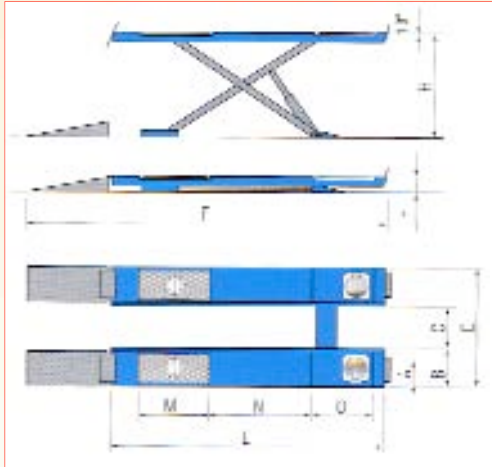
Rear slip plates
are equipped
with pneumatic
locking



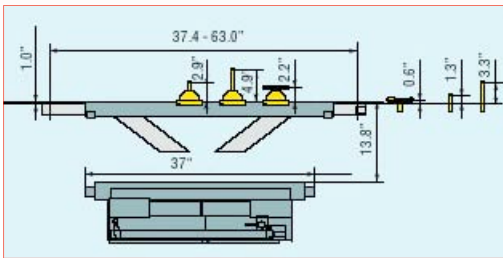
Standard base plates with
leveling system for easy
installation



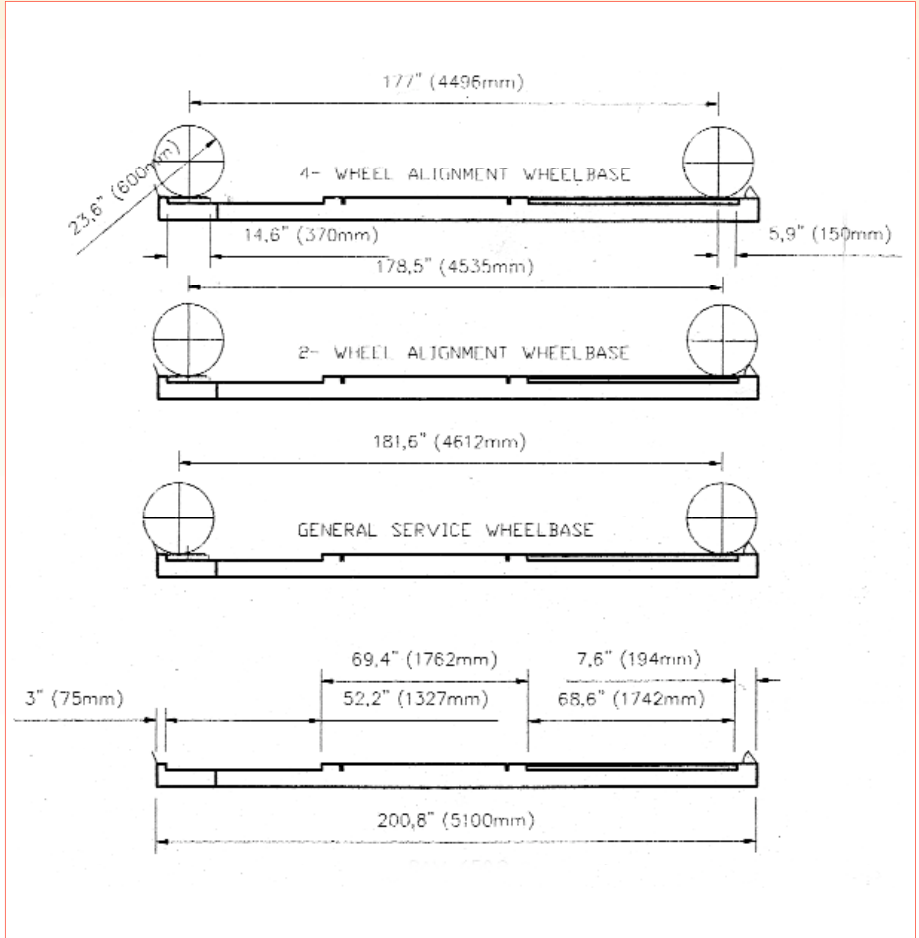
Rolling Jack



A	24.2"	B	24.2"	C	34.25"
D	82.67"	E	200"	F	260"
M	68.5"	N	69.5"	O	52.2"
h	10.4"	H	72.8"		



Rolling Jack



Order Information

Specifications

Model	Part #
DELUXE Scissor Lift (201"/12000 lb)	560-6502-10
(includes Lift, Spacers & Rolling Jacks)	

Call Your Distributor:

or **1-800-553-5953**

for a Kwik-Way Distributor in your area.

Kwik-Way Products Inc.

500 57th Street • Marion, IA 52302 USA
1-319-377-9421 • (FAX) 1-319-377-9101

www.kwik-way.com

Scissor Lift Specifications:

Maximum Vehicle Weight	12,000 lbs
Maximum Wheel Base	
General Service	181.6"
2-Wheel Alignment	178.5"
4-Wheel Alignment	177.0"
Rack Length	201"
Minimum 4-Wheel Alignment	84"
Runway Width	24"
Maximum Height	72"
Jacking Beam Capacity	6,600 lbs.
Motor	7.0 HP, (230V/60Hz/1Ph)

Complete Kwik-Way Wheel Service Product Line for Automotive, Heavy Duty & Industrial Equipment



Bench Lathes • On-Car Brake Lathe • Alignment Systems • Wheel Balancers • Tire Changers
Equipment, accessories, parts & supplies are subject to change without notice.