

KWIK-WAY®

TWC581 *Extended* **Swing-Arm**

Tire Changers

**Tire Diameters up to 44"
24" Wheel Capacity**

Extended Range

- Tall Tower for tires up to 14" wide
- Longer Arm for larger tires

Optional Left Kwik-Assist

- Dual Lifting Arm and Follower System
- Great assist for Low Profile and High Performance Tires

Self-Centering Turntable

- Twin Stainless Cylinders for high capacity clamping
- Fast, accurate internal and external wheel mounting
- Adjustable Jaws

Air Inflation at the Jaw Slides

- Twin Ports for easy bead seating
- High Capacity air inflation tank

Square Turntable

- Improves Bead Breaker clearance

Heavy Duty Bead Breaker

- Designed to handle larger tires with ease



Machine Available
with or without
Left Kwik-Assist

Kwik-Way has been manufacturing quality engine, brake and wheel service equipment for over 85 years. Launch is one of the largest manufacturers of automotive service equipment in the world, including diagnostics, wheel service and hand tools. Launch Kwik-Way matches high quality with competitive prices to offer a NEW line of Tire Changers. Built to American standards and American requirements using proven internal components, frame and steel parts, and industrial-quality electrical components.

Assembled and tested in our Marion, Iowa Factory.

KWIK-WAY

TWC581 *Extended Swing-Arm* Tire Changer

Tire Diameters up to 44"
Wheels up to 24"

14" Wheel Width

1.5 HP Motor & Dual Belt and Pulley configuration with cast iron drive pulley for durability

Tall Tower for greater wheel width

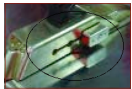
Self-Centering Turntable

Tool Board with Inflation Gauge

Air inflation at the jaw slides

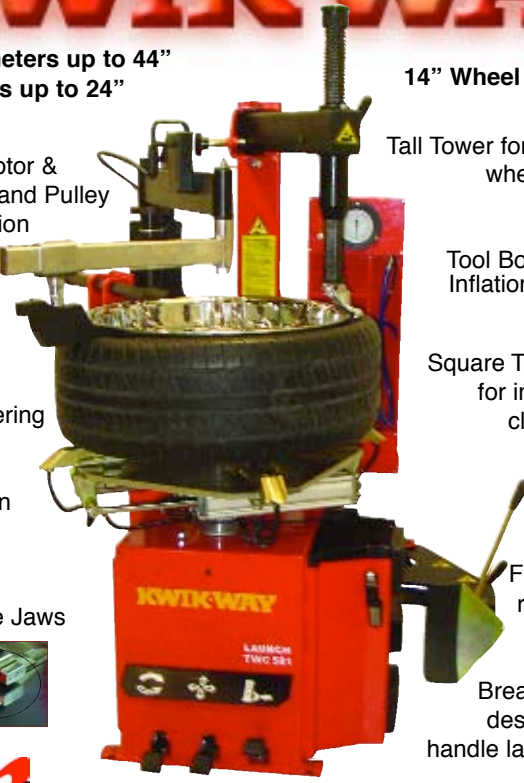
Square Turntable for improved clearance

Adjustable Jaws



Oiler & Filter with regulator

Bead Breaker Arm designed to handle large tires



Alloy Wheel Protection Kit Standard

Backed by the Best Warranty in the Industry

Optional Equipment

Two-For-One Wheel Lift 241-0000-01
to assist with the larger tires & wheels

- Allows operator to raise the wheel from the floor and position it easily on the tire changer (or wheel balancer)



Launch Kwik-Way, Inc.

500 57th Street • Marion, IA 52302 USA
1-319-377-9421 • (FAX) 1-319-377-9101

www.kwik-way.com

Contact Your Distributor:

Or Call: 1-800-553-5953

Launch Kwik-Way, Inc • 500 57th Street • Marion, IA 52302 USA
319-377-9421 • (FAX) 319-377-9101 • www.kwik-way.com

Specifications

TWC581 *Extended* Tire Changer specifications:

Max. Tire Diameter	44"
Wheel Width	5-14"
Turntable Torque	240 lbs.ft
Turntable RPM	9 rpm
Bead Breaker Force	5620 lbs
Wheel Size: Outside Clamping	10-24"
Wheel Size: Inside Clamping	12-26"
Electrical	115V/1Ph
Motor HP	1.5 hp
Shipping Weight (Machine Only)	740 lbs
Shipping Weight (with Assist)	875 lbs

Order Information

TWC581 Ext.Swing-Arm w/Left Kwik-Assist 750-0581-41
TWC581 Extended Swing-Arm Tire Changer 750-0581-15

Standard Equipment

- Adjustable Jaws
- Tool board with inflation gauge
- Tire Iron
- Mounted Lube Bucket with brush
- Alloy Wheel Protection Kit with tire iron protector, bead breaker blade protector, jaw protector and plastic insert for metal mount/demount head
- Solid nylon Mount/Demount Head accessory for alloy wheel applications

Left Kwik-Assist (machine also available without Kwik-Assist)

- For Low Profile and High Performance tires up to 24"
- Lifting Rollers and Follower Arm included

Complete Wheel Service Product Line



- Bench Lathes
- On-Car Brake Lathe
- Alignment Systems
- Alignment Lifts
- Wheel Balancers
- Tire Changers



Operating Supplies & Replacement Parts For Kwik-Way and other Major Brands